

**MATH GRADE 5**

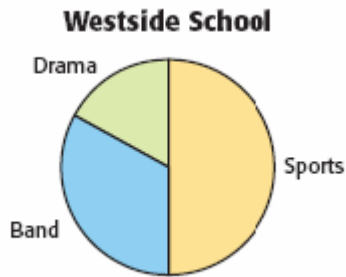
**A. Short Answer (SA) 2 points**

**Mean: 0.61**

**Standard: V.B**

Strand: Data Analysis and Probability
Content Standard: Students will understand how to formulate questions, analyze data, and determine probabilities
Benchmark: Select and use appropriate statistical methods to analyze data

At Westside School, student can participate in the activities shown in the circle graph below.



Find the approximate percent of students at Westside School who participate in band. Use words, numbers, or pictures to explain your answer.

## B. Rubric

Score	Description
2	<p>The student response</p> <ul style="list-style-type: none"><li>• offers a correct solution and is well supported by well-developed and accurate explanations.</li><li>• gives evidence that an appropriate problem-solving strategy was selected and implemented, but may contain minor errors that do not detract from the overall quality of the student response.</li><li>• is clearly organized and focused, and shows a mathematical understanding of the task or concept.</li><li>• contains sufficient work to convey thorough understanding of the problem.</li></ul>
1	<p>The student response</p> <ul style="list-style-type: none"><li>• offers a correct solution with no supporting evidence or explanation.</li><li>• offers a partially correct answer to the problem.</li><li>• may contain flaws indicating an incomplete understanding of the task or concept.</li><li>• may show faulty reasoning leading to weak answers or conclusions.</li><li>• may demonstrate unclear communication in writing or diagrams.</li><li>• may demonstrate a poor understanding of relevant mathematical procedure or concepts.</li></ul>
0	<p>The student response</p> <ul style="list-style-type: none"><li>• gives an incorrect response with no work shown.</li><li>• offers no mathematical understanding of the problem</li><li>• does not address the problem.</li></ul>

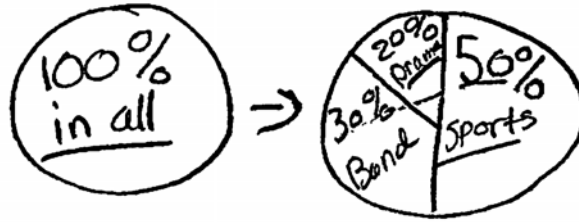
## C. Student Responses

### SCORE 2

65. I think that about 15% went to drama because 50% went to the sports section and more than 25% went to band it is about 35% leaving drama with 15%

65.

In a circle graph the whole thing is 100%. As you can see sports is 50% of the graph, so if,  $3 + 2 = 5$ , I tried  $30 + 20$  and it equalled 50%. so that means 30% of the chart is Band.

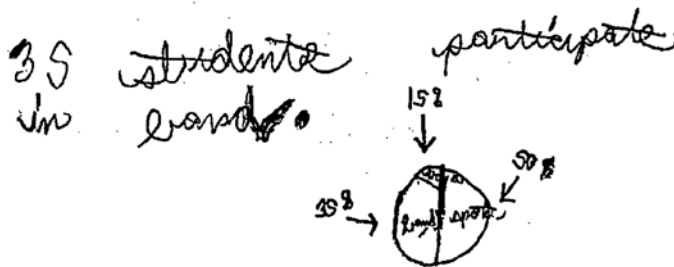


65.

I think that 30% of people prefer band because sports is half of the circle and band is bigger than drama.

SCORE 1

65.



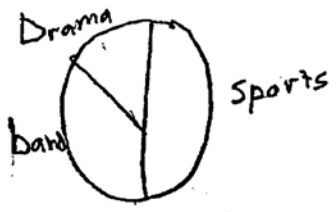
65. About 33 percent is in the bands.

65.



SCORE 0

65.



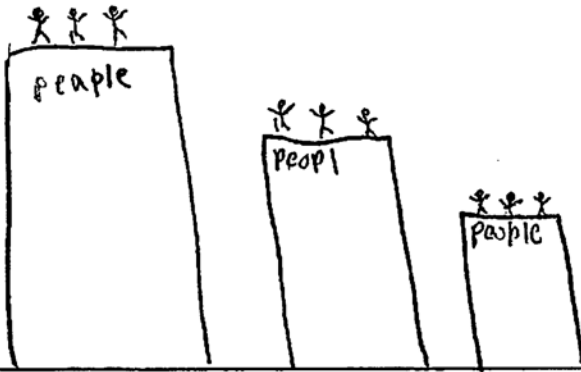
students can participate  
Drama, sports, band.

65.

sport

band

Drama



65. I think 50% of the school is in drama.