

# SECTION B

Membership  
Program Units  
Enrollment Data



2002-2003 STATE MEMBERSHIP

District	2002-2003	2002-2003	2002-2003	Difference		Difference		Difference	
	Operating Budget Membership <sup>1</sup>	40th Day Membership <sup>2</sup>	Final Funded Membership <sup>1</sup>	Operating Budget Versus 40-Day Mem	Percent Difference	40-Day Mem Versus Funded Mem	Percent Change	Operating Budget Versus Funded Mem	Percent Change
ALAMOGORDO	6,874.67	6,677.50	6,874.67	197.2	2.87%	(197.2)	-2.95%	0.0	0.00%
ALBUQUERQUE <sup>3</sup>	86,364.66	86,293.50	86,107.66	71.2	0.08%	185.8	0.22%	257.0	0.30%
ANIMAS	306.65	292.00	306.65	14.7	4.78%	(14.7)	-5.02%	0.0	0.00%
ARTESIA	3,457.17	3,441.00	3,457.17	16.2	0.47%	(16.2)	-0.47%	0.0	0.00%
AZTEC	3,200.16	3,141.50	3,200.16	58.7	1.83%	(58.7)	-1.87%	0.0	0.00%
BELEN	4,715.02	4,735.00	4,715.02	(20.0)	-0.42%	20.0	0.42%	0.0	0.00%
BERNALILLO	3,376.51	3,402.50	3,376.51	(26.0)	-0.77%	26.0	0.76%	0.0	0.00%
BLOOMFIELD	3,112.01	3,120.00	3,104.51	(8.0)	-0.26%	15.5	0.50%	7.5	0.24%
CAPITAN	558.35	571.50	558.35	(13.2)	-2.36%	13.2	2.30%	0.0	0.00%
CARLSBAD <sup>3</sup>	6,256.84	6,167.00	6,230.84	89.8	1.44%	(63.8)	-1.04%	26.0	0.42%
CARRIZOZO	215.50	222.00	215.50	(6.5)	-3.02%	6.5	2.93%	0.0	0.00%
CENTRAL CONS.	7,126.51	6,966.50	7,126.51	160.0	2.25%	(160.0)	-2.30%	0.0	0.00%
CHAMA VALLEY	520.02	498.00	520.02	22.0	4.23%	(22.0)	-4.42%	0.0	0.00%
CIMARRON <sup>3</sup>	597.99	545.00	609.99	53.0	8.86%	(65.0)	-11.92%	(12.0)	-2.01%
CLAYTON <sup>3</sup>	655.16	602.00	656.66	53.2	8.11%	(54.7)	-9.08%	(1.5)	-0.23%
CLOUDCROFT	463.67	439.00	463.67	24.7	5.32%	(24.7)	-5.62%	0.0	0.00%
CLOVIS	7,910.50	8,031.00	7,910.50	(120.5)	-1.52%	120.5	1.50%	0.0	0.00%
COBRE CONS.	1,754.17	1,693.00	1,754.67	61.2	3.49%	(61.7)	-3.64%	(0.5)	-0.03%
CORONA	84.67	81.00	84.67	3.7	4.33%	(3.7)	-4.53%	0.0	0.00%
CUBA	798.50	830.00	797.50	(31.5)	-3.95%	32.5	3.92%	1.0	0.13%
DEMING	5,204.34	5,368.50	5,204.34	(164.2)	-3.15%	164.2	3.06%	0.0	0.00%
DES MOINES	138.17	144.50	138.17	(6.3)	-4.58%	6.3	4.38%	0.0	0.00%
DEXTER	1,072.33	1,046.50	1,072.33	25.8	2.41%	(25.8)	-2.47%	0.0	0.00%
DORA	226.01	235.00	226.01	(9.0)	-3.98%	9.0	3.83%	0.0	0.00%
DULCE	710.18	676.00	710.18	34.2	4.81%	(34.2)	-5.06%	0.0	0.00%
ELIDA	111.51	110.50	111.51	1.0	0.90%	(1.0)	-0.91%	0.0	0.00%
ESPAÑOLA	4,897.18	4,879.50	4,897.18	17.7	0.36%	(17.7)	-0.36%	0.0	0.00%
ESTANCIA	899.02	856.50	899.02	42.5	4.73%	(42.5)	-4.96%	0.0	0.00%
EUNICE	604.50	596.50	604.50	8.0	1.32%	(8.0)	-1.34%	0.0	0.00%
FARMINGTON	9,937.34	9,951.50	9,955.34	(14.2)	-0.14%	(3.8)	-0.04%	(18.0)	-0.18%
FLOYD	264.85	259.50	264.85	5.3	2.02%	(5.3)	-2.06%	0.0	0.00%
FT. SUMNER	350.51	333.00	350.51	17.5	4.99%	(17.5)	-5.26%	0.0	0.00%
GADSDEN	12,893.84	13,380.00	12,893.84	(486.2)	-3.77%	486.2	3.63%	0.0	0.00%
GALLUP-MCKINLEY <sup>3</sup>	13,712.50	13,479.50	13,691.50	233.0	1.70%	(212.0)	-1.57%	21.0	0.15%
GRADY	101.34	115.00	101.34	(13.7)	-13.48%	13.7	11.88%	0.0	0.00%
GRANTS	3,617.19	3,700.50	3,617.19	(83.3)	-2.30%	83.3	2.25%	0.0	0.00%
HAGERMAN	503.17	490.50	503.17	12.7	2.52%	(12.7)	-2.58%	0.0	0.00%
HATCH	1,449.50	1,507.00	1,449.50	(57.5)	-3.97%	57.5	3.82%	0.0	0.00%
HOBBS	7,326.51	7,292.50	7,326.51	34.0	0.46%	(34.0)	-0.47%	0.0	0.00%
HONDO	126.17	129.00	126.17	(2.8)	-2.25%	2.8	2.20%	0.0	0.00%
HOUSE	164.34	174.00	164.34	(9.7)	-5.88%	9.7	5.55%	0.0	0.00%
JAL	406.83	407.00	406.83	(0.2)	-0.04%	0.2	0.04%	0.0	0.00%
JEMEZ MOUNTAIN	361.00	359.50	362.00	1.5	0.42%	(2.5)	-0.70%	(1.0)	-0.28%
JEMEZ VALLEY <sup>3</sup>	527.17	484.50	527.17	42.7	8.09%	(42.7)	-8.81%	0.0	0.00%
LAKE ARTHUR	206.82	192.50	206.82	14.3	6.92%	(14.3)	-7.44%	0.0	0.00%
LAS CRUCES	21,853.49	22,445.00	21,869.49	(591.5)	-2.71%	575.5	2.56%	(16.0)	-0.07%

2002-2003 STATE MEMBERSHIP

District	2002-2003	2002-2003	2002-2003	Difference		Difference		Difference	
	Operating Budget Membership <sup>1</sup>	40th Day Membership <sup>2</sup>	Final Funded Membership <sup>1</sup>	Operating Budget Versus 40-Day Mem	Percent Difference	40-Day Mem Versus Funded Mem	Percent Change	Operating Budget Versus Funded Mem	Percent Change
LAS VEGAS CITY <sup>3</sup>	2,351.01	2,274.50	2,335.01	76.5	3.25%	(60.5)	-2.66%	16.0	0.68%
LAS VEGAS WEST	2,039.51	2,044.50	2,039.51	(5.0)	-0.24%	5.0	0.24%	0.0	0.00%
LOGAN	267.82	254.50	267.82	13.3	4.97%	(13.3)	-5.23%	0.0	0.00%
LORDSBURG	795.66	786.50	795.66	9.2	1.15%	(9.2)	-1.16%	0.0	0.00%
LOS ALAMOS	3,452.00	3,532.50	3,452.00	(80.5)	-2.33%	80.5	2.28%	0.0	0.00%
LOS LUNAS	8,256.18	8,251.50	8,254.68	4.7	0.06%	(3.2)	-0.04%	1.5	0.02%
LOVING	559.34	548.50	559.34	10.8	1.94%	(10.8)	-1.98%	0.0	0.00%
LOVINGTON	2,645.34	2,636.50	2,645.34	8.8	0.33%	(8.8)	-0.34%	0.0	0.00%
MAGDALENA	338.16	352.00	338.16	(13.8)	-4.09%	13.8	3.93%	0.0	0.00%
MAXWELL	130.16	123.50	130.16	6.7	5.12%	(6.7)	-5.39%	0.0	0.00%
MELROSE	233.67	212.50	233.67	21.2	9.06%	(21.2)	-9.96%	0.0	0.00%
MESA VISTA	516.03	536.50	516.03	(20.5)	-3.97%	20.5	3.82%	0.0	0.00%
MORA	683.85	667.00	683.85	16.8	2.46%	(16.8)	-2.53%	0.0	0.00%
MORIARTY	4,269.68	4,160.00	4,269.68	109.7	2.57%	(109.7)	-2.64%	0.0	0.00%
MOSQUERO	55.84	50.00	55.84	5.8	10.45%	(5.8)	-11.67%	0.0	0.00%
MOUNTAINAIR	364.52	367.50	364.52	(3.0)	-0.82%	3.0	0.81%	0.0	0.00%
PECOS	806.65	854.50	806.65	(47.9)	-5.93%	47.9	5.60%	0.0	0.00%
PEÑASCO	626.68	639.50	626.68	(12.8)	-2.05%	12.8	2.01%	0.0	0.00%
POJOAQUE	1,893.00	1,884.00	1,893.00	9.0	0.48%	(9.0)	-0.48%	0.0	0.00%
PORTALES	2,716.02	2,749.00	2,716.02	(33.0)	-1.21%	33.0	1.20%	0.0	0.00%
QUEMADO	177.68	183.00	177.68	(5.3)	-2.99%	5.3	2.91%	0.0	0.00%
QUESTA <sup>3</sup>	604.17	598.50	610.17	5.7	0.94%	(11.7)	-1.95%	(6.0)	-0.99%
RATON	1,480.66	1,471.50	1,480.66	9.2	0.62%	(9.2)	-0.62%	0.0	0.00%
RESERVE	234.35	218.50	234.35	15.8	6.76%	(15.8)	-7.25%	0.0	0.00%
RIO RANCHO	10,196.16	10,736.50	10,196.16	(540.3)	-5.30%	540.3	5.03%	0.0	0.00%
ROSWELL <sup>3</sup>	9,292.67	9,352.00	9,290.67	(59.3)	-0.64%	61.3	0.66%	2.0	0.02%
ROY	108.33	111.50	108.33	(3.2)	-2.93%	3.2	2.85%	0.0	0.00%
RUIDOSO	2,415.17	2,307.00	2,415.17	108.2	4.48%	(108.2)	-4.69%	0.0	0.00%
SAN JON	160.34	167.50	160.34	(7.2)	-4.47%	7.2	4.28%	0.0	0.00%
SANTA FE <sup>3</sup>	13,112.36	13,267.00	13,115.36	(154.6)	-1.18%	151.6	1.14%	(3.0)	-0.02%
SANTA ROSA	768.34	735.50	768.34	32.8	4.27%	(32.8)	-4.46%	0.0	0.00%
SILVER CITY CONS.	3,401.01	3,333.50	3,404.01	67.5	1.98%	(70.5)	-2.12%	(3.0)	-0.09%
SOCORRO <sup>3</sup>	2,062.00	2,057.50	2,059.00	4.5	0.22%	(1.5)	-0.07%	3.0	0.15%
SPRINGER	252.85	244.50	252.85	8.3	3.30%	(8.3)	-3.41%	0.0	0.00%
TAOS <sup>3</sup>	3,296.01	3,253.50	3,296.01	42.5	1.29%	(42.5)	-1.31%	0.0	0.00%
TATUM	322.84	300.50	322.34	22.3	6.92%	(21.8)	-7.27%	0.5	0.15%
TEXICO	506.84	479.00	506.84	27.8	5.49%	(27.8)	-5.81%	0.0	0.00%
TRUTH OR CONSEQ.	1,606.83	1,669.00	1,606.83	(62.2)	-3.87%	62.2	3.72%	0.0	0.00%
TUCUMCARI	1,224.01	1,151.50	1,224.01	72.5	5.92%	(72.5)	-6.30%	0.0	0.00%
TULAROSA	1,072.17	994.00	1,072.17	78.2	7.29%	(78.2)	-7.86%	0.0	0.00%
VAUGHN	87.84	82.00	87.84	5.8	6.64%	(5.8)	-7.12%	0.0	0.00%
WAGON MOUND	176.99	175.00	176.99	2.0	1.12%	(2.0)	-1.13%	0.0	0.00%
ZUNI	1,736.17	1,751.50	1,736.17	(15.3)	-0.88%	15.3	0.88%	0.0	0.00%
STATEWIDE	313,311.2	313,928.0	313,036.7	(616.8)	-0.20%	891.3	0.28%	274.5	0.09%

NOTE: State membership includes grades 1-12, special education C, D, 3 and 4 year old, D-nonprofit (private special education), and early childhood education FTE.

<sup>1</sup>Because of the funding formula revisions, which went into effect on July 1, 1999 (Laws of 1999, Chapter 275, Section 1), membership for 2001-2002 was used to determine funding for 2002-2003.

<sup>2</sup>The 2002-2003, 40th day membership is shown here for comparison purposes only.

<sup>3</sup>The membership for these districts includes Charter Schools.

STATEWIDE FINAL FUNDED MEMBERSHIP BY GRADE  
1992-1993 THROUGH 2002-2003

	Grade 1	Grade 2	Grade 3	Grade 4	Grade 5	Grade 6	Grade 7	Grade 8	Grade 9	Grade 10	Grade 11	Grade 12	Sub-Total 1-12	E.C.E. FTE	Spec. Ed. <sup>1,2</sup> C, D & NP	TOTAL <sup>3</sup>
1992-93 (40 Day/Dec 1)	25,598.0	24,813.0	24,220.0	24,371.0	23,913.0	23,373.0	23,063.0	21,631.0	24,247.0	21,726.0	18,025.0	16,009.0	270,989.0	11,836.0	21,120.0	303,945.0
1993-94 (40 Day/Dec 1)	25,939.0	24,868.0	24,438.0	24,065.0	24,533.0	23,814.0	23,695.0	22,806.0	25,117.0	22,022.0	18,768.0	15,614.0	275,679.0	11,815.5	22,372.0	309,866.5
Difference	341.0	55.0	218.0	(306.0)	620.0	441.0	632.0	1,175.0	870.0	296.0	743.0	(395.0)	4,690.0	(20.5)	1,252.0	5,921.5
Percent Change	1.3%	0.2%	0.9%	-1.3%	2.6%	1.9%	2.7%	5.4%	3.6%	1.4%	4.1%	-2.5%	1.7%	-0.2%	5.9%	1.9%
1994-95 (40 Day/Dec 1)	25,703.0	24,810.0	24,466.0	24,224.0	23,969.0	24,113.0	23,795.0	23,291.0	26,468.0	22,253.0	18,822.0	15,880.0	277,794.0	12,014.0	24,144.0	313,952.0
Difference	(236.0)	(58.0)	28.0	159.0	(564.0)	299.0	100.0	485.0	1,351.0	231.0	54.0	266.0	2,115.0	198.5	1,772.0	5,921.5
Percent Change	-0.9%	-0.2%	0.1%	0.7%	-2.3%	1.3%	0.4%	2.1%	5.4%	1.0%	0.3%	1.7%	0.8%	1.7%	7.9%	1.9%
1995-96 (40 Day/Dec 1)	26,079.0	24,591.0	24,279.0	24,088.0	24,204.0	23,545.0	23,998.0	23,568.0	27,030.0	23,243.0	18,869.0	16,010.0	279,504.0	12,144.0	25,783.0	317,431.0
Difference	376.0	(219.0)	(187.0)	(136.0)	235.0	(568.0)	203.0	277.0	562.0	990.0	47.0	130.0	1,710.0	130.0	1,639.0	3,479.0
Percent Change	1.46%	-0.88%	-0.76%	-0.56%	0.98%	-2.36%	0.85%	1.19%	2.12%	4.45%	0.25%	0.82%	0.62%	1.08%	6.79%	1.11%
1996-97 (40 Day/Dec 1)	26,177.0	25,010.0	24,016.0	23,945.0	23,854.0	23,691.0	23,265.0	23,617.0	27,597.0	23,397.0	19,623.0	15,964.0	280,156.0	12,137.0	27,098.0	319,391.0
Difference	98.0	419.0	(263.0)	(143.0)	(350.0)	146.0	(733.0)	49.0	567.0	154.0	754.0	(46.0)	652.0	(7.0)	1,315.0	1,960.0
Percent Change	0.38%	1.70%	-1.08%	-0.59%	-1.45%	0.62%	-3.05%	0.21%	2.10%	0.66%	4.00%	-0.29%	0.23%	-0.06%	5.10%	0.62%
1997-98 (40 Day/Dec 1)	26,762.0	26,036.0	25,788.0	25,558.0	25,925.0	25,764.0	26,058.0	25,578.0	29,930.0	26,259.0	21,978.0	18,103.0	303,739.0	14,038.0	NA	317,777.0
Difference	585.0	1,026.0	1,772.0	1,613.0	2,071.0	2,073.0	2,793.0	1,961.0	2,333.0	2,862.0	2,355.0	2,139.0	23,583.0	1,901.0	NA	(1,614.0)
Percent Change	2.23%	4.10%	7.38%	6.74%	8.68%	8.75%	12.01%	8.30%	8.45%	12.23%	12.00%	13.40%	8.42%	15.66%	NA	-0.51%
1998-99 (40 Day/Dec 1)	26,133.0	25,970.0	25,721.0	25,761.0	25,500.0	25,527.0	25,824.0	25,794.0	29,527.0	26,310.0	21,915.0	18,741.0	302,723.0	13,824.5	NA	316,547.5
Difference	(629.0)	(66.0)	(67.0)	203.0	(425.0)	(237.0)	(234.0)	216.0	(403.0)	51.0	(63.0)	638.0	(1,016.0)	(213.5)	NA	(1,229.5)
Percent Change	-2.35%	-0.25%	-0.26%	0.79%	-1.64%	-0.92%	-0.90%	0.84%	-1.35%	0.19%	-0.29%	3.52%	-0.33%	-1.52%	NA	-0.39%
1999-00 (based on prior year) <sup>4</sup>	26,142.0	25,978.0	25,728.0	25,770.0	25,509.0	25,533.0	25,844.0	25,807.0	29,527.0	26,310.0	21,915.0	18,741.0	302,804.0	13,829.5	NA	316,633.5
Difference	9.0	8.0	7.0	9.0	9.0	6.0	20.0	13.0	0.0	0.0	0.0	0.0	81.0	5.0	NA	86.0
Percent Change	0.03%	0.03%	0.03%	0.03%	0.04%	0.02%	0.08%	0.05%	0.00%	0.00%	0.00%	0.00%	0.03%	0.04%	NA	0.03%
2000-01 (based on prior year) <sup>5</sup>	25,360.4	25,243.0	25,699.0	25,555.7	25,509.3	25,066.4	25,132.7	25,315.0	28,880.0	25,057.3	21,403.3	18,756.7	296,978.7	15,155.6	NA	312,134.3
Difference	(781.6)	(735.0)	(29.0)	(214.3)	0.3	(466.6)	(711.3)	(492.0)	(647.0)	(1,252.7)	(511.7)	15.7	(5,825.3)	1,326.1	NA	(4,499.2)
Percent Change	-0.03	-0.03	0.00	-0.01	0.00	-0.02	-0.03	-0.02	-0.02	-0.05	-0.02	0.00	-0.02	0.10	NA	-0.014
2001-02 (based on prior year) <sup>6</sup>	24,220.0	24,645.0	24,991.0	25,531.0	25,516.7	25,177.7	25,051.7	24,814.0	28,632.7	25,333.6	21,249.6	18,917.7	294,080.7	18,128.2	NA	312,208.9
Difference	(1,140.4)	(598.0)	(708.0)	(24.7)	7.4	111.3	(81.0)	(501.0)	(247.3)	276.3	(153.7)	161.0	(2,898.0)	2,972.6	NA	74.6
Percent Change	-4.50%	-2.37%	-2.76%	-0.10%	0.03%	0.44%	-0.32%	-1.98%	-0.86%	1.10%	-0.72%	0.86%	-0.98%	19.61%	NA	0.02%
2002-03 (based on prior year) <sup>7</sup>	24,011.0	23,971.7	24,916.7	25,231.7	25,816.3	25,478.0	25,424.1	25,046.7	28,379.4	25,623.7	21,575.3	18,564.7	294,039.2	18,997.6	NA	313,036.7
Difference	(209.0)	(673.3)	(74.3)	(299.3)	299.6	300.3	372.3	232.7	(253.3)	290.1	325.7	(353.0)	(41.5)	869.4	NA	827.8
Percent Change	-4.50%	-2.37%	-2.76%	-0.10%	0.03%	0.44%	-0.32%	-1.98%	-0.86%	1.10%	-0.72%	0.86%	-0.98%	19.61%	NA	0.02%

<sup>1</sup>Spec. Ed. D Includes three and four year old developmentally disabled beginning 1987-88 through 1996-97:

<sup>1</sup>1992-93 - 1,257 four year old, 799 three year old.

<sup>1</sup>1994-95 - 1,676 four year old, 1,184 three year old.

<sup>1</sup>1996-97 - 1,611 four year old, 1,877 three year old.

<sup>1</sup>1993-94 - 1,344 four year old, 1,089 three year old.

<sup>2</sup>Prior to 1997-98, three and four year old developmentally disabled students and students receiving C and D level special education services were counted apart from the grade level counts.

<sup>3</sup>Beginning in 1997-98, all students are counted at grade level (Laws of 1997, Chapter 40).

<sup>3</sup>Difference in 'TOTAL' due to rounding by grade level.

<sup>4</sup>1999-2000 Funding was based on 1998-1999 Final Funded Membership (Laws of 1999, Chapter 275). The only adjustment made was to include 1999-2000 membership for the San Diego Riverside Charter School

<sup>5</sup>2000-2001 funding was based on the 1999-2000 Final Funded Membership (Laws of 1999, Chapter 275). The only adjustment made was to include 2000-2001 membership for startup Charter Schools.

<sup>6</sup>2001-2002 funding was based on the 2000-2001 Final Funded Membership (Laws of 1999, Chapter 275). The only adjustment made was to include 2001-2002 membership for startup Charter Schools.

<sup>7</sup>2002-2003 funding was based on the 2001-2002 Final Funded Membership (Laws of 1999, Chapter 275). The only adjustment made was to include 2002-2003 membership for startup Charter Schools.

**MEMBERSHIP, PROGRAM UNITS, PROGRAM DOLLARS  
2002-2003, 2003-2004**

	<b>STUDENT MEMBERSHIP<sup>1</sup></b>			<b>PROGRAM UNITS</b>			<b>PROGRAM DOLLARS</b>		
	2003-2004			2003-2004			2002-2003	2003-2004	2003-2004
	2002-2003 Actual	Appropriated Membership	2003-2004 Budgeted	2002-2003 Actual	Appropriated Units	2003-2004 Budgeted	\$2,889.89 Per Unit	Appropriated \$2,977.23	Budgeted at \$2,977.23
ECE FTE	18,997.56	21,289.50	21,472.99	27,356.478	30,656.880	30,921.105	\$79,057,212	\$91,272,583	\$92,059,241
Grades 1-12	294,039.16	293,703.00	294,535.39	347,238.409	347,048.615	347,914.036	1,003,480,806	1,033,243,548	1,035,820,105
Special Education:									
A/B Membership	35,433.30	35,922.00	35,779.34	24,803.310	25,145.400	25,045.538	71,678,838	74,863,639	74,566,327
Class C	12,507.98	12,291.00	12,310.65	12,507.980	12,291.000	12,310.650	36,146,686	36,593,134	36,651,636
Class D	12,472.35	11,785.00	11,761.99	24,944.700	23,570.000	23,523.980	72,087,439	70,173,311	70,036,299
3 & 4-yr. Develop. Delayed	3,779.07	3,822.00	3,702.01	7,558.134	7,644.000	7,404.020	21,842,176	22,757,946	22,043,470
Related Services FTE	1,772.67	1,782.99	1,772.49	44,316.725	44,574.750	44,312.250	128,070,460	132,709,283	131,927,760
Bilingual FTE	25,660.21	23,919.66	24,065.40	12,830.105	11,959.830	12,032.700	37,077,592	35,607,165	35,824,115
Fine Arts Program		80,000.00			1,328.000	0.000		3,953,761	
Training & Experience				46,029.941	48,417.997	48,356.356	133,021,466	144,151,512	143,967,994
National Board Certified Teachers					157.500	66.000		468,914	196,497
Size Adjustment				20,500.204	20,412.130	21,179.677	59,243,335	60,771,606	63,056,770
Enrollment Growth				1,277.970	2,917.506	1,756.442	3,693,193	8,686,085	5,229,332
At-Risk				23,151.734	23,048.139	23,243.948	66,905,965	68,619,611	69,202,579
Plus Save Harmless				210.091	210.091	0.000	607,140	625,489	0
Plus Even Start & Native American Preschool									
Plus At-Risk Save Harmless							1,925,198	1,878,620	1,849,756
Total Membership <sup>1</sup> /Units/Dollars	313,036.72	314,992.50	316,008.38	592,725.781	599,381.837	598,066.702	\$1,714,837,505	\$1,786,376,207	\$1,782,431,883
Plus 2003-2004 PED Estimated Start-up Charter Schools/New Programs					5,552.269			16,530,393	0
<b>TOTAL UNITS/PROGRAM COST</b>				<b>592,725.781</b>	<b>604,934.106</b>	<b>598,066.702</b>	<b>\$1,714,837,505</b>	<b>\$1,802,906,600</b>	<b>\$1,782,431,883</b>
Less Credits:									
Impact Aid (P.L. 874)							(\$50,362,539)	(\$50,750,000)	(\$47,142,908)
Forest Reserve							(701,674)	(350,000)	(694,065)
Local Tax							(7,839,332)	(7,500,000)	(8,179,143)
<b>TOTAL Credits</b>							<b>(\$58,903,545)</b>	<b>(\$58,600,000)</b>	<b>(\$56,016,116)</b>
Less Cash Balance Credit:								(\$16,400,000)	(\$3,389,149)
<b>CALC. STATE EQUALIZATION GUARANTEE</b>							<b>\$1,655,933,960</b>	<b>\$1,727,906,600</b>	<b>\$1,723,026,618</b>
Less Guaranteed Energy Savings							(\$3,377,295)		(\$3,306,968)
<b>DISTRIBUTED STATE EQUALIZATION GUARANTI</b>							<b>\$1,652,556,665</b>		<b>\$1,719,719,650</b>
<b>CALC. STATE EQUALIZATION GUARANTEE</b>							<b>\$1,655,933,960</b>	<b>\$1,727,906,600</b>	<b>\$1,723,026,618</b>
Plus Excess Credits							\$1,488,740		
<b>APPROPRIATED STATE EQUALIZATION GUARAN</b>							<b>\$1,657,422,700</b>	<b>\$1,727,906,600</b>	

<sup>1</sup>Beginning with the 2000-2001 school year, student membership is based on an average of the 40-, 80-, and 120-day enrollment counts.

HISTORY OF THE UNIT VALUE  
1974-1975 ACTUAL TO 2003-2004 FINAL

School Year	Initial Unit Value	Final Unit Value	Percent Change Year to Year
1974-1975		\$616.50	
1975-1976		\$703.00	14.03%
1976-1977		\$800.00	13.80%
1977-1978		\$905.00	13.13%
1978-1979		\$1,020.00	12.71%
1979-1980		\$1,145.00	12.25%
1980-1981		\$1,250.00	9.17%
1981-1982		\$1,405.00	12.40%
1982-1983 <sup>1</sup>	\$1,540.00	\$1,511.33	7.57%
1983-1984		\$1,486.00	-1.68%
1984-1985		\$1,583.50	6.56%
1985-1986 <sup>2</sup>	\$1,608.00	\$1,618.87	2.23%
1986-1987		\$1,612.51	-0.39%
1987-1988		\$1,689.00	4.74%
1988-1989		\$1,737.78	2.89%
1989-1990		\$1,811.51	4.24%
1990-1991		\$1,883.74	3.99%
1991-1992		\$1,866.00	-0.94%
1992-1993 <sup>3</sup>	\$1,851.73	\$1,867.96	0.11%
1993-1994 <sup>3</sup>	\$1,927.27	\$1,935.99	3.64%
1994-1995 <sup>3</sup>	\$2,015.70	\$2,029.00	4.80%
1995-1996 <sup>3</sup>	\$2,113.00	\$2,113.00	4.14%
1996-1997 <sup>3</sup>	\$2,125.83	\$2,149.11	1.71%
1997-1998 <sup>3</sup>	\$2,175.00	\$2,175.00	1.20%
1998-1999 <sup>3</sup>	\$2,322.00	\$2,344.09	7.77%
1999-2000 <sup>4</sup>	\$2,460.00	\$2,460.00	4.94%
2000-2001 <sup>4</sup>	\$2,632.32	\$2,647.56	7.62%
2001-2002 <sup>4</sup>	\$2,868.72	\$2,871.01	8.44%
2002-2003 <sup>5</sup>	\$2,896.01	\$2,889.89	0.66%
2003-2004 <sup>6</sup>	\$2,977.23	\$2,976.20	2.99%

<sup>1</sup>The 1982-1983 General Fund Appropriation was reduced by 2.0 percent.

<sup>2</sup>The final unit value includes \$10.87 due to the ½ mill redistribution (Ch. 15, Laws of 1985).

<sup>3</sup>The "floating" unit value was in effect.

<sup>4</sup>The "floating" unit value was in effect; the basis for funding changed to prior year membership.

<sup>5</sup>The final unit value included a decrease of \$6.12 under the initial unit value due to statewide units included in operating budgets which were greater than the number of units used to establish initial unit value.

<sup>6</sup>The final unit value included a decrease of \$1.03 under the initial unit value due to 90% At Risk Save Harmless funding and additional Growth Units included in operating budgets which were greater than the amounts used to establish initial unit value.

**COMPARISON OF PROGRAM COST PER MEMBERSHIP**  
**2002-2003 ACTUAL TO 2003-2004 BUDGETED <sup>1</sup>**  
**RANKED ON THE BASIS OF 2003-2004 COST PER MEMBERSHIP <sup>2</sup>**

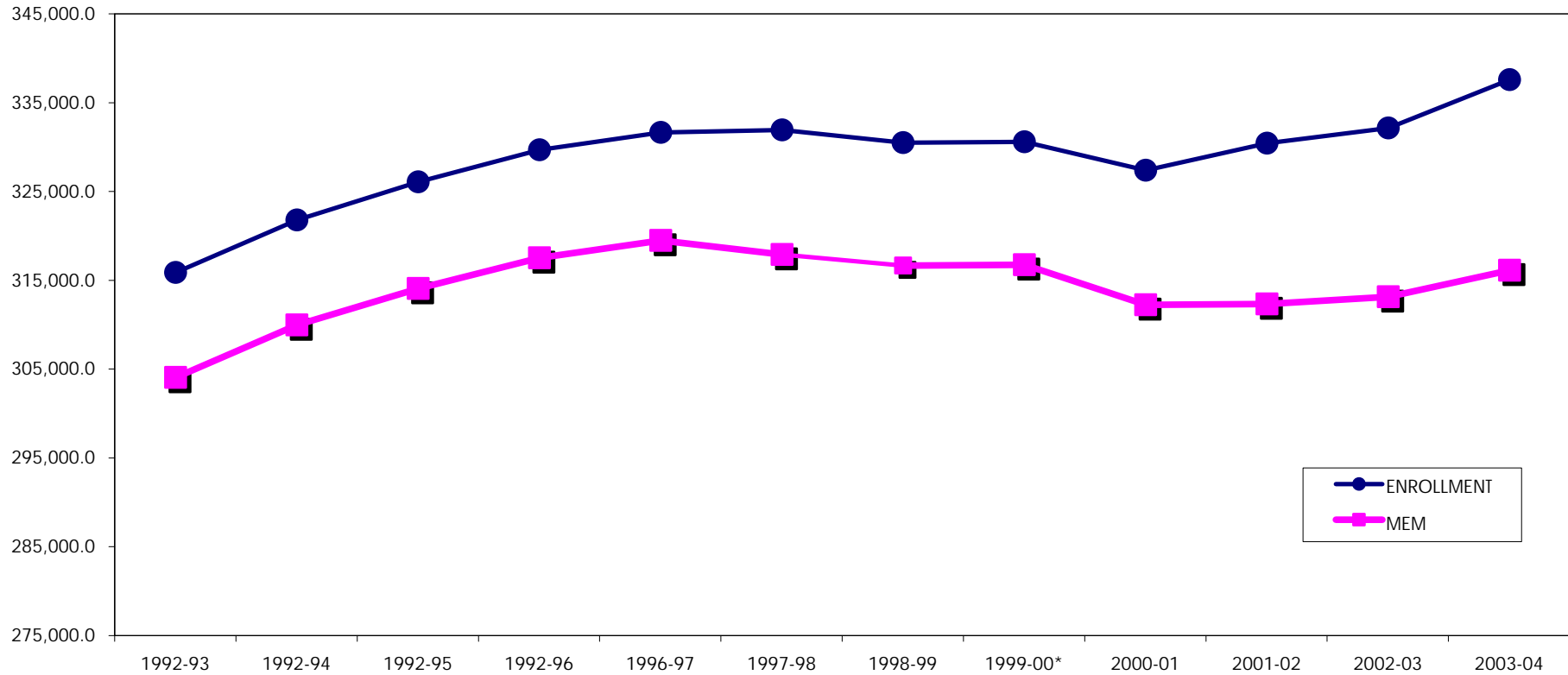
District	2003-2004 Rank	2002-2003 Actual	2003-2004 Budgeted	Difference	Percent Change	District	2003-2004 Rank	2002-2003 Actual	2003-2004 Budgeted	Difference	Percent Change
ALAMOGORDO	N/A	\$4,972	\$5,138	\$166	3.34%	HOUSE	21	\$8,694	\$8,202	(\$492)	-5.66%
Lacy Simms Middle	N/A	\$0	\$5,675	\$5,675	N/A	JAL	38	\$6,654	\$7,277	\$623	9.36%
ALAMOGORDO W/CHARTER	83	\$4,972	\$5,145	\$173	3.48%	JEMEZ MOUNTAIN	15	\$8,268	\$8,548	\$280	3.39%
ALBUQUERQUE	N/A	\$5,290	\$5,444	\$154	2.91%	JEMEZ VALLEY	N/A	\$7,567	\$9,261	\$1,694	22.39%
Academia de Lengua	N/A	\$0	\$5,686	\$5,686	N/A	San Diego Riverside	N/A	\$6,987	\$8,396	\$1,409	20.17%
Amy Biehl	N/A	\$7,919	\$7,651	(\$268)	-3.38%	Walatowa Charter High	N/A	\$0	\$8,557	\$8,557	N/A
Charter Voc. High	N/A	\$6,932	\$7,011	\$79	1.14%	JEMEZ VALLEY W/CHARTER	9	\$7,466	\$9,058	\$1,592	21.32%
East Mountain	N/A	\$5,940	\$5,039	(\$901)	-15.17%	LAKE ARTHUR	33	\$7,801	\$7,544	(\$257)	-3.29%
Horizon Academy N.W.	N/A	\$0	\$3,965	\$3,965	N/A	LAS CRUCES	75	\$5,429	\$5,487	\$58	1.07%
Horizon Academy S.	N/A	\$4,406	\$4,627	\$221	N/A	LAS VEGAS CITY	N/A	\$5,531	\$5,910	\$379	6.85%
Horizon Academy W.	N/A	\$0	\$3,965	\$3,965	N/A	Bridge Academy Charter	N/A	\$6,749	\$9,498	\$2,749	40.73%
La Academia De Esper	N/A	\$0	\$7,197	\$7,197	N/A	LAS VEGAS CITY W/CHARTER	60	\$5,543	\$5,952	\$409	7.38%
Los Puentes	N/A	\$10,153	\$10,298	\$145	N/A	LAS VEGAS WEST	50	\$6,456	\$6,613	\$157	2.43%
Nuestros Valores	N/A	\$8,521	\$7,936	(\$585)	-6.87%	LOGAN	20	\$7,839	\$8,361	\$522	6.66%
PAPA	N/A	\$6,853	\$6,608	(\$245)	-3.58%	LORDSBURG	42	\$6,749	\$6,956	\$207	3.07%
Paseo Del Monte	N/A	\$0	\$5,043	\$5,043	N/A	LOS ALAMOS	61	\$5,720	\$5,891	\$171	2.99%
Robert F. Kennedy	N/A	\$7,380	\$8,329	\$949	12.86%	LOS LUNAS	66	\$5,605	\$5,756	\$151	2.69%
South Valley	N/A	\$7,707	\$7,021	(\$686)	-8.90%	LOVING	41	\$6,620	\$7,016	\$396	5.98%
Southwest Secondary	N/A	\$6,914	\$6,715	(\$199)	-2.88%	LOVINGTON	64	\$5,679	\$5,779	\$100	1.76%
The Learning Comm Cl	N/A	\$7,187	\$7,135	(\$52)	-0.72%	MAGDALENA	5	\$8,707	\$9,532	\$825	9.48%
Twenty First Century Ch	N/A	\$5,231	\$5,218	(\$13)	-0.25%	MAXWELL	4	\$8,804	\$9,544	\$740	8.41%
ALBUQUERQUE W/CHARTERS	76	\$5,333	\$4,660.00	\$133	2.50%	MELROSE	8	\$8,435	\$9,092	\$657	7.79%
ANIMAS	22	\$7,727	\$8,194	\$467	6.04%	MESA VISTA	25	\$7,986	\$8,141	\$155	1.94%
ARIESA	70	\$5,379	\$5,597	\$218	4.05%	MORA	44	\$6,763	\$6,928	\$165	2.44%
AZTEC	78	\$5,232	\$5,424	\$192	3.67%	MORIARTY	80	\$5,284	\$5,382	\$98	1.85%
BELEN	72	\$5,423	\$5,565	\$142	2.62%	MOSQUERO	2	\$11,901	\$10,786	(\$1,115)	-9.37%
BERNALILLO	49	\$6,556	\$6,710	\$154	2.35%	MOUNTAINAIR	35	\$7,347	\$7,351	\$4	0.05%
BLOOMFIELD	77	\$5,179	\$5,465	\$286	5.52%	PECOS	24	\$7,662	\$8,145	\$483	6.30%
CAPITAN	53	\$6,136	\$6,220	\$84	1.37%	PENASCO	37	\$7,225	\$7,308	\$83	1.15%
CARLSBAD	N/A	\$5,920	\$6,123	\$203	3.43%	POJOAQUE	74	\$5,601	\$5,511	(\$90)	-1.61%
Jefferson Mont. Acad.	N/A	\$7,196	\$8,769	\$1,573	21.86%	PORTALES	84	\$5,175	\$5,135	(\$40)	-0.77%
CARLSBAD W/CHARTERS	54	\$5,949	\$6,199	\$250	4.20%	QUEMADO	23	\$8,085	\$8,170	\$85	1.05%
CARRIZO	18	\$8,435	\$8,414	(\$21)	-0.25%	QUESTA	N/A	\$7,685	\$8,157	\$472	6.14%
CENTRAL	68	\$5,460	\$5,726	\$266	4.87%	Red River Valley	N/A	\$7,367	\$7,651	\$284	3.86%
CHAMA	16	\$8,182	\$8,470	\$288	3.52%	Roots & Wings	N/A	\$7,821	\$7,997	\$176	2.25%
CIMARRON	N/A	\$7,589	\$8,042	\$453	5.97%	QUESTA W/CHARTERS	27	\$7,667	\$8,108	\$441	5.75%
Moreno Valley High	N/A	\$8,209	\$8,278	\$69	0.84%	RAION	67	\$5,598	\$5,735	\$137	2.45%
CIMMARON W/CHARTERS	29	\$7,662	\$8,079	\$417	5.44%	RESERVE	12	\$8,198	\$8,907	\$709	8.65%
CLAYTON	N/A	\$7,073	\$7,261	\$188	2.66%	RIO RANCHO	81	\$5,021	\$5,310	\$289	5.76%
Amistad	N/A	\$8,591	\$10,510	\$1,919	22.34%	ROSWELL	N/A	\$5,353	\$5,514	\$161	3.01%
CLAYTON W/CHARTER	36	\$7,112	\$7,337	\$225	3.16%	Sidney Gutierrez	N/A	\$6,876	\$6,796	(\$80)	-1.16%
CLOUDCROFT	32	\$6,988	\$7,631	\$643	9.20%	ROSWELL W/CHARTER	73	\$5,359	\$5,522	\$163	3.04%
CLOVIS	86	\$5,019	\$5,091	\$72	1.43%	ROY	6	\$9,179	\$9,373	\$194	2.11%
COBRE	39	\$6,631	\$7,143	\$512	7.72%	RUIDOSO	51	\$6,106	\$6,475	\$369	6.04%
CORONA	7	\$8,952	\$9,307	\$355	3.97%	SAN JON	19	\$8,216	\$8,375	\$159	1.94%
CUBA	42	\$6,776	\$6,956	\$180	2.66%	SANTA FE	N/A	\$5,067	\$5,180	\$113	2.23%
DEMING	87	\$4,844	\$5,089	\$245	5.06%	Academy for Tech & Clas	N/A	\$8,075	\$8,276	\$201	2.49%
DES MOINES	13	\$8,728	\$8,809	\$81	0.93%	Turquoise Trail	N/A	\$7,073	\$7,010	(\$63)	-0.89%
DEXTER	57	\$5,713	\$5,968	\$255	4.46%	Monte Del Sol Charter	N/A	\$4,561	\$4,756	\$195	4.28%
DORA	17	\$8,148	\$8,450	\$302	3.71%	SANTA FE W/CHARTERS	82	\$5,123	\$5,242	\$119	2.32%
DULCE	58	\$5,644	\$5,967	\$323	5.72%	SANTA ROSA	30	\$7,540	\$7,909	\$369	4.89%
ELIDA	28	\$7,751	\$8,073	\$322	4.15%	SILVER CONS.	56	\$5,790	\$6,044	\$254	4.39%
ESPAÑOLA	65	\$5,771	\$5,766	(\$5)	-0.09%	SOCORRO	N/A	\$5,263	\$5,567	\$304	5.78%
ESTANCIAS	47	\$6,313	\$6,752	\$439	6.95%	Cottonwood Valley	N/A	\$5,473	\$5,870	\$397	7.25%
EUNICE	55	\$5,946	\$6,073	\$127	2.14%	SOCORRO W/CHARTERS	71	\$5,276	\$5,588	\$312	5.91%
FARMINGTON	88	\$4,908	\$5,076	\$168	3.42%	SPRINGER	10	\$8,572	\$8,972	\$400	4.67%
FLOYD	34	\$7,353	\$7,491	\$138	1.88%	TAOS	N/A	\$5,731	\$5,725	(\$6)	-0.10%
FT. SUMNER	26	\$7,673	\$8,131	\$458	5.97%	Anansi Charter School	N/A	\$6,998	\$7,445	\$447	6.39%
GADSDEN	79	\$5,223	\$5,394	\$171	3.27%	Taos Municipal Charter	N/A	\$4,639	\$5,019	\$380	8.19%
GALLUP	N/A	\$4,992	\$5,128	\$136	2.72%	TAOS W/CHARTER	69	\$5,674	\$5,701	\$27	0.48%
Middle College High	N/A	\$8,996	\$9,243	\$247	2.75%	TATUM	31	\$7,597	\$7,809	\$212	2.79%
GALLUP W/CHARTERS	85	\$5,001	\$5,137	\$136	2.72%	TEXICO	40	\$6,869	\$7,078	\$209	3.04%
GRADY	14	\$9,998	\$8,797	(\$1,201)	-12.01%	TRUTH OR CONSEQ.	63	\$5,761	\$5,843	\$82	1.42%
GRANTS	62	\$5,553	\$5,864	\$311	5.60%	TUCUMCARI	52	\$5,995	\$6,269	\$274	4.57%
HAGERMAN	46	\$6,660	\$6,807	\$147	2.21%	TULAROSA	45	\$6,269	\$6,912	\$643	10.26%
HATCH	59	\$5,427	\$5,920	\$493	9.08%	VAUGHN	3	\$9,752	\$10,496	\$744	7.63%
HOBBS	89	\$4,754	\$4,997	\$243	5.11%	WAGON MOUND	1	\$10,187	\$10,950	\$763	7.49%
HONDO	11	\$8,428	\$8,929	\$501	5.94%	ZUNI	48	\$6,722	\$6,744	\$22	0.33%
						STATEWIDE		\$4,972	\$5,635	\$663	13.33%

<sup>1</sup>The average of the prior year 40th, 80th and 120th day membership was used to budget membership program units for 2003-2004, with the exception of program units for new and full-day Kindergarten programs which are budgeted based on projected 2003-2004 40th day membership. (Laws of 1999, Chapter 275, Section 1, funding based on <sup>2</sup>District ranking is based on the 2003-2004 program cost per membership based on total district membership including charter schools.

RATIO OF 2003-2004 OPERATING BUDGET MEMBERSHIP TO PROGRAM UNITS

District	2003-2004 Program Units	2003-2004 Total MEM	Ratio of Units to MEM	Difference in Comparison to Statewide Avg.	District	2003-2004 Program Units	2003-2004 Total MEM	Ratio of Units to MEM	Difference in Comparison to Statewide Avg.
ALAMOGORDO	11,626.060	6,737.165	1.73	(0.17)	HOUSE	474.725	172.330	2.75	0.86
Lacy Simms Middle	171.565	90.000	1.91	0.01	JAL	1,020.417	417.493	2.44	0.55
ALAMOGORDO W/Charters	11,797.625	6,827.165	1.73	(0.16)	JEMEZ MOUNTAIN	1,040.708	362.485	2.87	0.98
ALBUQUERQUE	153,716.403	84,065.500	1.83	(0.06)	JEMEZ VALLEY	1,268.104	407.680	3.11	1.22
Academia de Lengua Y Cultu	114.598	60.000	1.91	0.02	San Diego Riverside	202.544	71.820	2.82	0.93
Amy Biehl.	587.226	228.500	2.57	0.68	Walatowa Charter High	201.180	70.000	2.87	0.98
Charter Voc. High	718.210	305.010	2.35	0.46	JEMEZ VALLEY W/CHARTER	1,671.828	549.500	3.04	1.15
East Mountain	630.247	372.340	1.69	(0.20)	LAKE ARTHUR	490.300	193.503	2.53	0.64
Horizon Academy N.W.	713.857	536.000	1.55	(0.34)	LAS CRUCES	41,360.614	22,443.340	1.84	(0.05)
Horizon Academy S.	713.631	459.165	1.33	(0.56)	LAS VEGAS CITY	4,436.642	2,235.160	1.98	0.09
Horizon Academy W.	713.857	536.000	1.33	(0.56)	Bridge Academy	86.137	27.000	3.19	1.30
La Academia De Esperanza	364.995	151.000	2.42	0.52	LAS VEGAS CITY W/CHARTER	4,522.779	2,262.160	2.00	0.11
Los Puentes	425.454	123.000	3.46	1.57	LAS VEGAS WEST	4,523.342	2,036.503	2.22	0.33
Nuestros Valores	429.130	161.000	2.67	0.77	LOGAN	700.676	249.500	2.81	0.92
PAPA	530.475	238.990	2.22	0.33	LORDSBURG	1,806.365	773.157	2.34	0.44
Paseo Del Monte	220.192	130.000	1.69	(0.20)	LOS ALAMOS	6,960.957	3,517.997	4.54	2.65
Robert F. Kennedy	574.926	205.500	2.80	0.91	LOS LUNAS	15,971.410	8,260.510	0.15	(1.74)
South Valley	541.249	229.500	2.36	0.47	LOVING	1,261.602	535.335	9.89	7.99
Southwest Secondary	602.191	267.000	2.26	0.36	LOVINGTON	5,292.442	2,726.667	0.40	(1.49)
The Learning Comm Ctr.	412.214	172.000	2.40	0.50	MAGDALENA	1,096.473	342.480	1.12	(0.77)
Twenty First Century Charter	340.020	194.000	1.75	(0.14)	MAXWELL	383.640	119.677	5.44	3.54
ALBUQUERQUE W/CHARTERS	162,348.875	88,434.505	1.84	(0.06)	MELROSE	650.509	213.007	6.64	4.75
ANIMAS	818.281	297.330	2.75	0.86	MESA VISTA	1,414.997	517.490	2.96	1.07
ARTESIA	6,710.750	3,569.490	1.88	(0.01)	MORA	1,531.667	658.173	11.54	9.64
AZTEC	5,817.221	3,193.160	1.82	(0.07)	MORIARTY	7,592.581	4,199.827	0.04	(1.85)
BELEN	8,976.557	4,802.145	1.87	(0.02)	MOSQUERO	182.335	50.330	17.68	15.78
BERNALILLO	7,637.639	3,388.990	2.25	0.36	MOUNTAINAIR	889.703	360.327	6.51	4.62
BLOOMFIELD	5,634.720	3,069.490	1.84	(0.06)	PECOS	2,346.440	857.657	1.79	(0.10)
CAPITAN	1,238.528	592.840	2.09	0.20	PENASCO	1,537.769	626.493	5.70	3.81
CARLSBAD	12,337.150	5,998.500	2.06	0.16	POJOAQUE	3,573.087	1,930.343	2.46	0.57
Jefferson Montessori	518.387	176.005	2.95	1.05	PORTALES	4,753.490	2,756.010	0.18	(1.71)
CARLSBAD W/CHARTERS	12,855.537	6,174.505	2.08	0.19	QUEMADO	497.156	181.177	7.80	5.91
CARRIZOZO	625.502	221.340	2.83	0.93	QUESTA	1,412.919	515.675	0.25	(1.64)
CENTRAL	13,359.654	6,946.497	1.92	0.03	Red River Valley	130.219	50.670	2.57	0.68
CHAMA VALLEY	1,408.218	494.995	2.84	0.95	Roots & Wings	56.433	21.010	2.69	0.79
CIMARRON	1,270.066	470.180	2.70	0.81	QUESTA W/CHARTERS	1,599.571	587.355	2.72	0.83
Moreno Valley	244.673	88.000	2.78	0.89	RATON	2,811.449	1,459.477	1.93	0.03
CIMARRON W/CHARTERS	1,514.739	558.180	2.71	0.82	RESERVE	652.682	218.163	2.99	1.10
CLAYTON	1,428.704	585.835	2.44	0.55	RIO RANCHO	19,234.656	10,784.173	1.78	(0.11)
Amistad	49.441	14.005	3.53	1.64	ROSWELL	17,070.636	9,217.000	1.85	(0.04)
CLAYTON W/CHARTER	1,478.145	599.840	2.46	0.57	Sidney Gutierrez	127.078	55.670	2.28	0.39
CLOUDCROFT	1,118.742	436.490	2.56	0.67	ROSWELL W/CHARTER	17,197.714	9,272.670	1.85	(0.04)
CLOVIS	13,691.368	8,006.327	1.71	(0.18)	ROY	349.949	111.153	3.15	1.26
COBRE	4,018.111	1,674.660	2.40	0.51	RUIDOSO	4,992.627	2,295.650	2.17	0.28
CORONA	250.080	79.997	3.13	1.23	SAN JON	472.618	168.003	2.81	0.92
CUBA	1,978.244	846.663	2.34	0.44	SANTA FE	21,861.604	12,565.505	1.74	(0.15)
DEMING	9,032.126	5,283.645	1.71	(0.18)	Academy for Tech & Classics	451.248	162.330	2.78	0.89
DES MOINES	425.008	143.650	2.96	1.07	Turquoise Trail	667.903	283.670	2.35	0.46
DEXTER	2,109.180	1,052.167	2.00	0.11	Monte Del Sol Charter	677.838	424.330	1.60	(0.30)
DORA	662.245	233.337	2.84	0.95	SANTA FE W/CHARTERS	23,658.593	13,435.835	1.76	(0.13)
DULCE	1,342.820	670.013	2.00	0.11	SANTA ROSA	1,937.834	729.510	2.66	0.76
ELIDA	311.371	114.837	2.71	0.82	SILVER CITY	6,759.781	3,329.670	2.03	0.14
ESPAÑOLA	9,391.540	4,849.503	1.94	0.04	SOCORRO	3,596.532	1,923.330	1.87	(0.02)
ESTANCIA	1,993.352	879.000	2.27	0.38	Cottonwood Valley	277.669	140.840	1.97	0.08
EUNICE	1,207.266	591.837	2.04	0.15	SOCORRO W/CHARTERS	3,874.201	2,064.170	1.88	(0.02)
FARMINGTON	16,949.589	9,942.010	1.70	(0.19)	SPRINGER	730.255	242.320	3.01	1.12
FLOYD	683.099	271.503	2.52	0.62	TAOS	5,776.380	3,003.850	1.92	0.03
FT. SUMNER	888.094	325.163	2.73	0.84	Anansi Charter School	100.031	40.000	2.50	0.61
GADSDEN	23,630.072	13,042.825	1.81	(0.08)	Taos Municipal Charter	348.378	206.670	1.69	(0.21)
GALLUP	23,148.428	13,440.185	1.72	(0.17)	TAOS W/CHARTER	6,224.789	3,250.520	1.92	0.02
Middle College High	91.089	29.340	3.10	1.21	TATUM	781.144	297.830	2.62	0.73
GALLUP W/CHARTER	23,239.517	13,469.525	1.73	(0.17)	TEXICO	1,168.854	491.653	2.38	0.48
GRADY	331.925	112.330	2.95	1.06	TRUTH OR CONS.	3,266.680	1,664.510	1.96	0.07
GRANIS	7,145.509	3,628.000	1.97	0.08	TUCUMCARI	2,393.876	1,136.827	2.11	0.21
HAGERMAN	1,109.597	485.303	2.29	0.39	TULAROSA	2,312.901	996.173	2.32	0.43
HATCH	2,963.951	1,490.657	1.99	0.10	VAUGHN	297.329	84.340	3.53	1.63
HOBBS	12,124.683	7,224.510	1.68	(0.21)	WAGON MOUND	629.527	171.160	3.68	1.79
HONDO VALLEY	389.362	129.827	3.00	1.11	ZUNI	3,962.818	1,749.495	2.27	0.37
					STATEWIDE	598,066.702	316,008.378	1.89	

STUDENT MEMBERSHIP & ENROLLMENT  
 1992-1993 ACTUAL TO 2003-2004 BUDGETED



\*NOTE: Because of the funding formula revisions, which went into effect on July 1, 1999 (Laws of 1999, Chapter 275, Section 1), membership for 1998-1999 was used to determine 1999-2000 funding and the average of the prior year's 40th, 80th, and 120th day membership was used to determine funding beginning in 2000-2001, and the average of the prior year's 40th, 80th, and 120th day membership was used to determine funding beginning 2000-2001 and fiscal years thereafter.

Sources: "Public School Pupil Membership Funded Reports," 1991-1992 to 2002-2003; 2003-2004 operating budgets.

**GROWTH IN SPECIAL EDUCATION**  
**1986-1987 ACTUAL TO 2003-2004 BUDGETED**

Year	A/B Programs	A/B Membership	Ancillary Programs	C, D, DNPTC Membership	3 & 4 Yr. Dev. Delayed	Program Dollars Generated	Percent of Program Cost
1986-87	894.82		445.73	13,546	392 <sup>1</sup>	\$96,750,123 <sup>2</sup>	14.3%
1987-88	919.20		470.07	14,367	827	\$111,784,462	15.1%
1988-89	946.86		485.56	15,176	1,155	\$122,824,031	15.7%
1989-90	983.39		519.03	16,290	1,255	\$136,439,854	16.4%
1990-91	1,051.97		557.05	17,376	1,406	\$152,505,707	16.4%
1991-92	1,121.61		646.47	18,066	1,598	\$161,855,347	17.2%
1992-93	1,183.30		671.31	19,064	2,056	\$173,545,813	17.9%
1993-94	1,229.47		718.04	19,939	2,433	\$191,330,407	18.5%
1994-95	1,272.24		837.72	21,284	2,860	\$218,831,708	19.5%
1995-96 <sup>2</sup>	1,308.83		1,043.02	22,474	3,309	\$249,487,615	21.0%
1996-97	1,330.44		1,124.06	23,610	3,488	\$267,968,658	21.9%
1997-98 <sup>3</sup>		32,425	1,548.18	24,412	3,680	\$229,127,550	17.8%
1998-99		33,561	1,706.28	25,361	3,825	\$262,774,130	18.8%
1999-00 <sup>4</sup>		33,564	1,706.38	25,362	3,825	\$275,783,958	18.8%
2000-01 <sup>4</sup>		34,103	1,765.73	25,159	3,488	\$299,082,134	19.2%
2001-02 <sup>4</sup>		35,054	1,780.09	25,053	3,564	\$326,390,574	19.2%
2002-2003 <sup>4</sup>		35,433	1,772.72	24,980	3,779	\$329,829,212	19.2%
2003-2004 Operating Budgets <sup>4</sup>		35,779	1,772.49	24,073	3,702	\$335,225,493	18.8%
15-Year Increase (1987-88 to 2002-03)			277.12%	73.87%	356.96%	195.06%	
10-Year Increase (1992-93 to 2002-03)			164.07%	31.03%	83.81%	90.05%	
5-Year Increase (1997-98 to 2002-03)			14.50%	2.33%	2.69%	43.95%	

<sup>1</sup>Four-year-old Developmentally Delayed children were funded by a transfer from Reserve Fund in the amount of \$2,140,920 which is not reflected here in Program Dollars Generated or Percent of Program Cost.

<sup>2</sup>Ancillary FTE includes ancillary evaluative services FTE.

<sup>3</sup>Beginning with the 1997-98 school year, funding for A- and B-level special education services will be determined on the basis of membership rather than program FTE. Prior to 1997-98, students receiving C and D level special education services were counted apart from the grade level counts. Beginning in 1997-98, all students are counted at grade level (Laws of 1997, Chapter 40).

<sup>4</sup>Because of the funding formula revisions, which went into effect on July 1, 1999 (Laws of 1999, Chapter 275, Section 1), membership for 1998-1999 was used to determine the funding for 1999-2000 and the average of the prior year's 40th, 80th and 120th day membership was used to determine funding beginning in 2000-2001, and the average of the prior year's 40th, 80th, and 120th day membership was used to determine funding beginning 2000-2001 and fiscal years thereafter.