

A Team Approach to the Communication Considerations IEP Addendum



Naomi Santi-Unger
Jennifer Kieltyka
Priscilla Shannon Gutiérrez

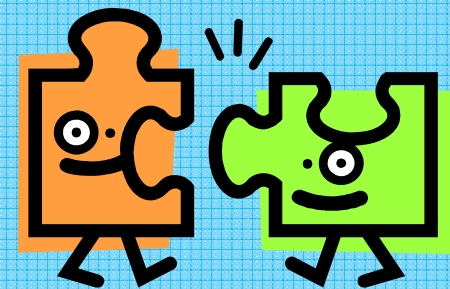
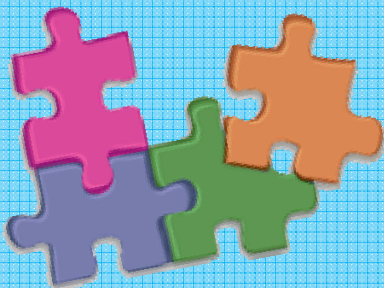
The Communication Considerations Addendum

- Developed to assist school districts in meeting the communication needs of students who are deaf or hard of hearing.
- Requires the IEP team to consider communication needs when developing, reviewing, or revising an IEP.
- Also requires the IEP team to consider opportunities for direct communication with peers and adults as well as direct instruction.

The goal of the form is to plan for and provide better access to academic content, language, and communication for the Deaf or Hard of Hearing student.



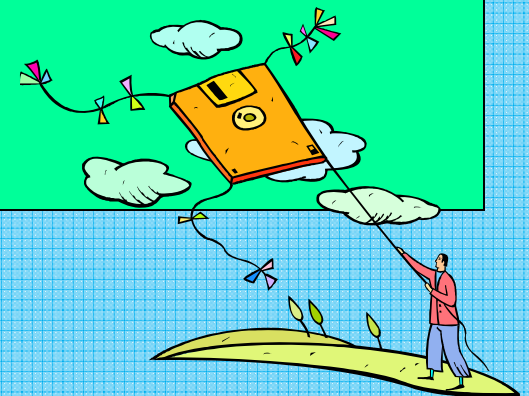
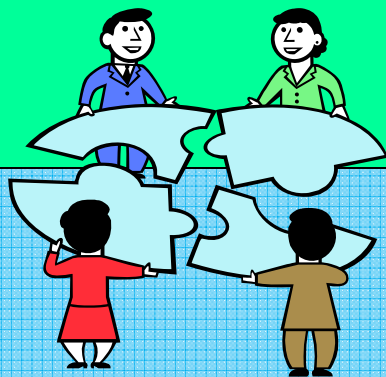
A multi-disciplinary approach brings a variety of perspectives to the process which can reduce the possibility that something will get “overlooked” and that the pieces of the educational program will fit together to benefit the student.



Components of the Team Approach

- Multiple perspectives.
- Parents included as integral partners.
- Observation by an Outreach Specialist prior to the IEP meeting.
- Draft CC Addendum developed prior to the IEP meeting
- Point Person responsible for implementation part of CC Addendum planning.

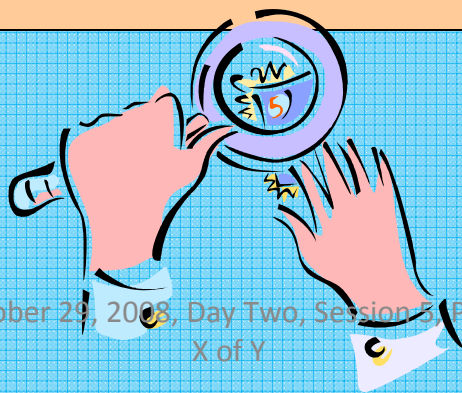
Parents can provide a wealth of information about their child that the teacher or educational team may not be aware of. Participation in the development of the CC addendum facilitates participation in the IEP.



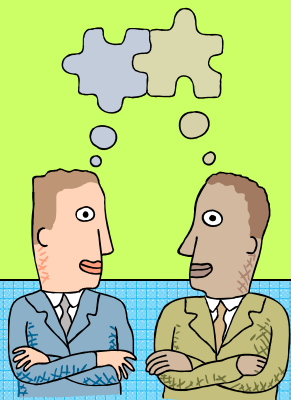
Parental Perspective

- Six- year old son with Autism **AND** hearing impairment!
 - Verbal language at 4 1/2 years
 - Picture Symbols at 3 years
 - ASL - 'true' first language from birth
 - Still uses **ALL THREE!**
- CC Addendum details specific communication needs for each student.
 - Addresses issues beyond the scope of the IEP - 'Educates' the IEP!
 - Best done with a TEAM approach, careful thought, a ROUGH draft, and patience!

Observation by the Outreach Specialist provides additional information related to **access** such as communication, supports or needed modifications and accommodations



Since the point person responsible for assuring the implementation of the CC Addendum is a member of the planning group, they are better able to support the school team responsible for educating the student.



Developing and Sharing a Draft CC Form Before the Meeting

- Gives team members a chance to really think about what the needs of the individual student are.
- Provides a working document to guide the dialogue at the IEP.
- Saves time at the IEP meeting because key members are already “on the same page.”



The Communication Considerations Addendum Is a Powerful Tool that...

- Helps the IEP Team address the unique needs of the Deaf or Hard of Hearing student.
- Provides key players on the IEP Team a chance to collaborate both before and during the IEP.
- Provides an opportunity to enhance the understanding of IEP Team members related to Deaf education.
- Works best with a team approach!

