

A red paperclip is positioned on the left side of a white sheet of paper, which is resting on a wooden surface. The paperclip is a standard metal design with a red coating. The background is a soft, out-of-focus light brown. The text on the right is in a dark red, serif font.

Content of the Individualized Education Program (IEP)

Produced by NICHCY, 2007

This presentation
looks at...



What information must
be provided in an IEP
as listed in Part B
Regulations?

Part 1. The Big Picture

Before the IEP

After the IEP



Part 1. The Big Picture

Produced by NICHCY, 2007



*Access to and
participation in...*

*Results focused
preparation for....*

General Education
Curriculum

Further Education

Extracurricular
Activities

Employment

Nonacademic
Activities

Independent Living

Part 1. The Big Picture

A building needs...



A Setting

A child with a disability needs...



A Plan

Part B INDIVIDUALIZED E
The Individualized Education Program (IEP) for each eligible child with a disability. The F §§300.320-300.328, the procedures that and revise the IEP for each child. The dc

Part 1. The Big Picture

A building needs...

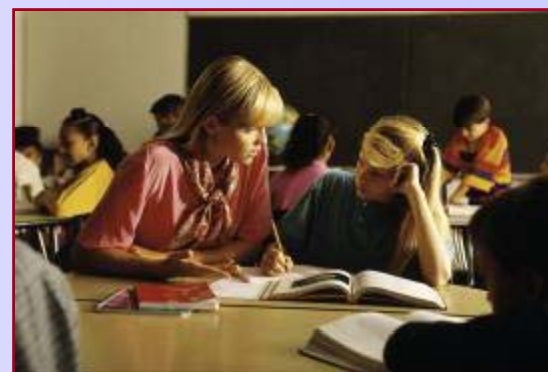


A construction crew

A child with a disability needs...



Systematic supports



Part 1. The Big Picture

Foundation

FAPE

Supports

Special education
Related services

Reinforced
materials

Supplementary aids
and services
Assistive technology

Quality work

Highly qualified
personnel

Part 2. A Concrete Example



Becky is 7, smart, and eager to learn. She has special health care needs—specifically, juvenile diabetes—that adversely affect her educational performance.

List 2 critical elements you think Becky will need in school so that her diabetes doesn't interfere with her learning.

Elements of Becky's IEP

- Training of staff
- Freedom to eat in class and elsewhere
- School health services
- Specific arrangements for field trips & special events
- Specific arrangements for absences from school



Part 3. A Close Look

*At the bricks
and mortar of an...*



**Individualized
Education
Program!**

STUDENT PROFILE

1



**Student/Family Vision
Statement**



**Student Strengths, Interests
and Areas of Concern**

CONSIDERATION OF SPECIAL FACTORS

2

- **Is the student visually impaired?**
- **Is the student deaf or hard of hearing?**
- **Does the student have limited English proficiency?**
- **Does the student have assistive technology needs?**
- **Does the student exhibit behaviors that impede his or her learning or that of others?**



IEP Document: What's Included?

“Present Levels”

3

Statement of the...

**Child's present levels
of academic achievement
and functional performance**

This includes:

A

**how child's disability
affects child's involvement
and progress in the general
education curriculum**



10/28/08, Day 1, Session 1

Produced by NICHCY, 2007

IEP Document: What's Included?

“Present Levels”

For preschoolers (as appropriate):

B

“Present levels” must state how the disability affects the child’s participation in appropriate activities





“Present Levels”



Comes from evaluation data, observations,
parent /teacher reports, and schoolwork
information documented on the Student Profile

10/28/08/, Day 1, Session 1

MEASURABLE POST-SECONDARY GOALS

4

Required by age 14 or 8th grade

- Measurable post-secondary goals are written in terms of what the student will do, **defining specific measurable behavior**, under what **conditions**, including specific **criteria to measure progress**, **evaluation procedure**, and identifying the **completion timeline**



IEP Document: What's Included?

“Transition Planning”



5

Beginning no later than the first IEP to be in effect after the child is 14*...

And updated annually thereafter...

**Or younger if determined appropriate by the IEP Team*

GRADUATION OPTIONS

6

- Selection of Standard or Alternative Options
- Results of Exit Exam
- Graduation Needs
- Continuing or Transition IEP
- Projected Graduation Date



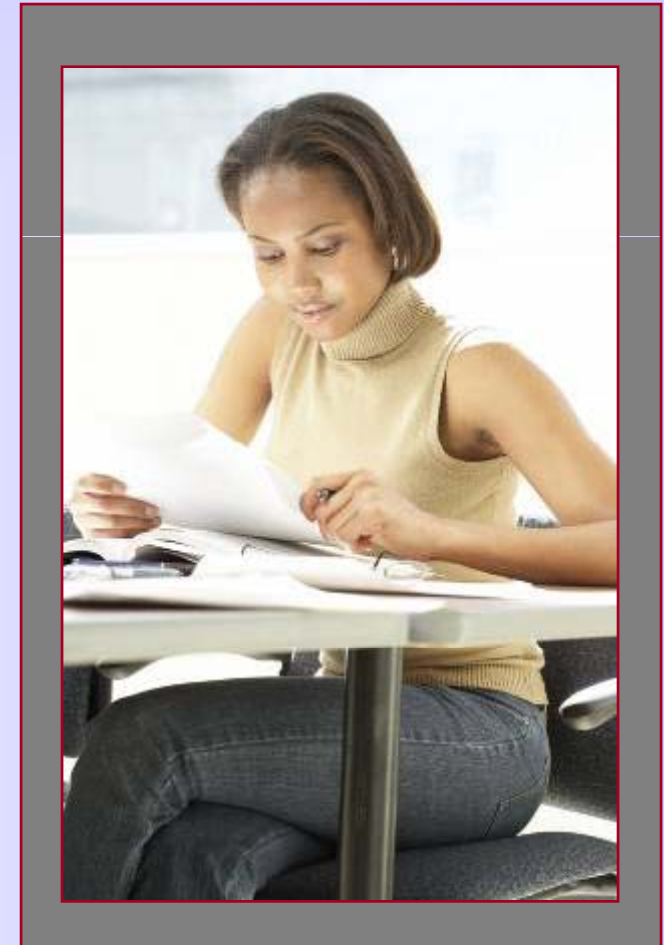
IEP Document: What's Included?

“Annual Goals”

7

Statement of ...
Measurable **annual goals**, including academic and functional goals

A



IEP Document: What's Included?

“Annual Goals”

These measurable annual goals must be designed to...

- meet child's needs that result from child's disability
to enable the child to be involved in and make progress in the general education curriculum; and
- meet each of the child's other educational needs that result from the child's disability



Writing goals can be one of the hardest parts of developing the IEP

- What does the child need to learn or do **academically**?
- What does he or she need to learn or do **functionally**?
- What's reasonable to achieve **in a year**?
- Can you **measure** whether or not the child has reached the goal?



IEP Document: What's Included?

7
B
Description of ...
Benchmarks or
short-term
objectives*



Produced by NICHCY, 2007

* For those who take alternate assessments aligned to alternate achievement standards

IEP Document: What's Included?

Take a Wild Guess!

What must be included in IEP?

...if the IEP team determines that the child must take an *alternate assessment* instead of a particular regular State or district wide assessment of student achievement...



IEP Document: What's Included?

A Wild Answer!

Statement of...

- Why the child cannot participate in the regular assessment; and
- Why the particular alternate assessment selected is appropriate for the child



Produced by NICHCY, 2007

IEP Document: What's Included?

“Extent of
Nonparticipation”

8

Explanation of the...

Extent, if any, to which the child will **not** participate with nondisabled children in the regular class and in activities already described*

* Involvement and progress in the general education curriculum, extracurricular activities, and other nonacademic activities

IEP Document: What's Included?

“Special Education...”

9

Statement of the...

Special education and related services and supplementary aids and services* to be provided to the child, or on behalf of the child... →

These must* be based on peer-reviewed research to the extent practicable

IEP Document: What's Included?

“Service Delivery”

10

Statements projecting...

- When the services and modifications to be provided will begin
- How **often** they will be provided
- **Where** they will be provided
- How long they will last

IEP Document: What's Included?

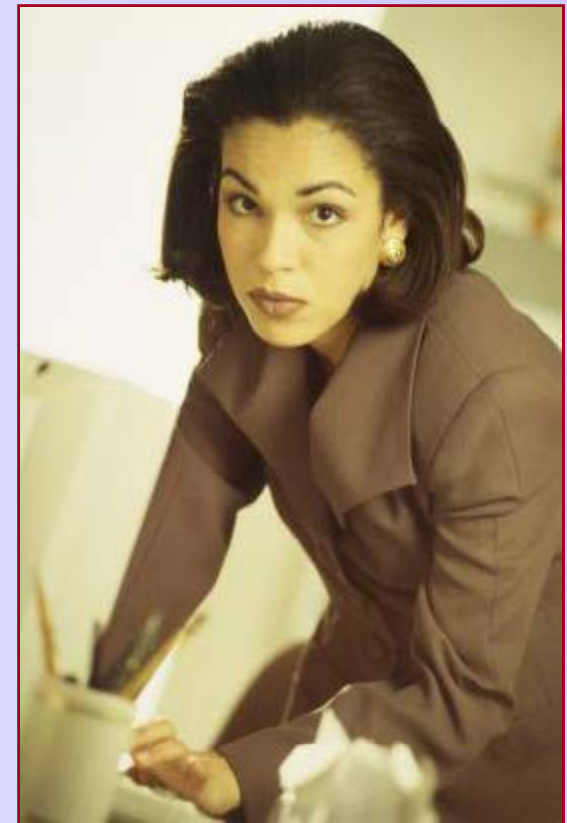
“Special Education...”

- Statement of the...*
- 11 Program modifications or supports for school personnel that will be provided for the child...

to...

i	ii	iii
---	----	-----

§300.20(a)(4)



IEP Document: What's Included?

“Assessment Accommodations”

12

Statement of...

Any individual appropriate **accommodations** that are necessary to measure the academic achievement and functional performance of the child on State and district wide assessments*...

* These must be consistent with section 612(a)(16)

IEP Document: What's Included?

“Measuring Progress”



13

Description of...

- How the child's progress toward meeting the annual goals will be measured

...and... →

IEP Document: What's Included?

“Reporting Progress”

Description of...

When **periodic reports** will be provided on child's progress toward meeting the annual goals

Examples given in the law?

Quarterly or other periodic reports,
concurrent with the issuance of report
cards

IEP Document: What's Included?

“Transfer of Rights”



~~14~~

Beginning no later than one year before the child reaches the **age of majority** under State law...

...the child must be informed of any upcoming **transfer of rights**

Additional Considerations When Developing the IEP

- Special factors IEP Team must consider
- Strengths of the child
- Concerns of parents for enhancing their child's education
- IEPs / IFSPs for children aged 3-5



Let's Recap



Produced by NICHCY, 2007

10/28/08, Day 1, Session 1

34